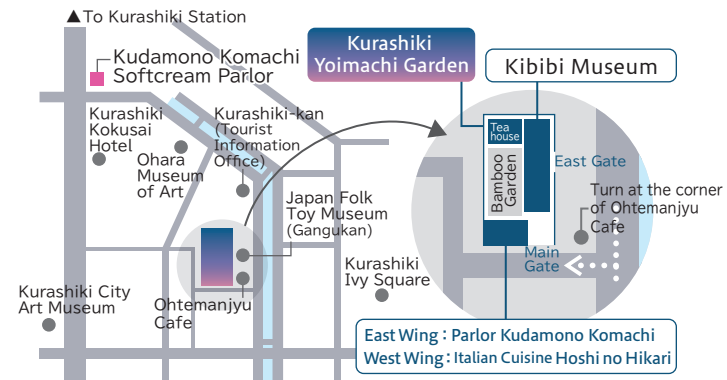




Information for Visitors

Opening Hours	10:00 a.m. - 6:00 p.m. (admission until 5:30)
Closed	Mondays, Tuesdays (If a holiday, the museum will also be closed on another day that week) * New Year's holidays, exhibition changes, and other temporary closures will be posted on our website.
Admission Fee	Adults ¥700, Junior high and high school students ¥500, Elementary school students ¥300 * 20% discount for groups of 10 or more. * Free admission for caregivers accompanying wheelchair users.

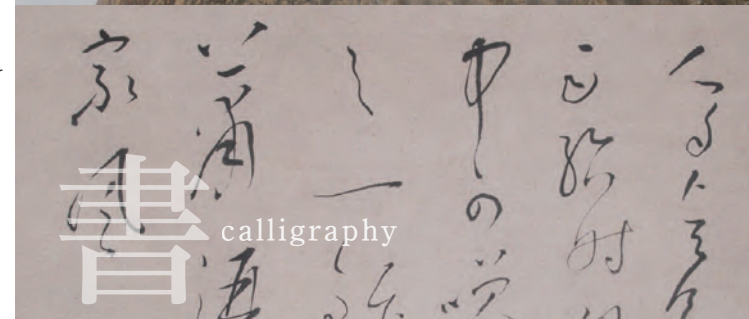
Access About 15 minutes by car from Kurashiki IC
About 15 minutes by car from Hayashima IC
About 15 minutes on foot from JR Kurashiki Station
* There is no parking lot, so please use a nearby paid parking lot.



Kurashiki Yoimachi Garden seeks to fuse art and food culture. It opened in 2015. In addition to a fruit parlor and an Italian restaurant, this multi-purpose cultural center has a bamboo grove stroll garden that is lit up at night and an outdoor event venue for concerts and the like. In April 2021, the Kibibi Museum was added. It exhibits a wide range of cultural assets related to the area.

The Kurashiki Yamada Art Collection Foundation's Kibibi Museum

1-4-22 Chuo, Kurashiki, Okayama 710-0046 Japan
Inside Kurashiki Yoimachi Garden
Tel. :086-425-8080 Fax. :086-425-8181 ✉ info@kibibi.or.jp
https://kibibi.or.jp



Encountering Kibi, and Falling in Love

Before the modern period,
this area was called Kibi Province.

Its long history stretches back to ancient times.

The various cultural assets bequeathed by our predecessors
in the region convey to us their outstanding skills, wisdom,
aesthetic sensibilities, and worldviews.

Transcending time and space to encounter these can be
a thrilling and luxurious experience, almost reminiscent of love.
Even when you are feeling down, we invite you to be embraced
by Kibi's culture to enrich the heart and mind.

The Kurashiki Yamada Art Collection Foundation's Kibibi Museum

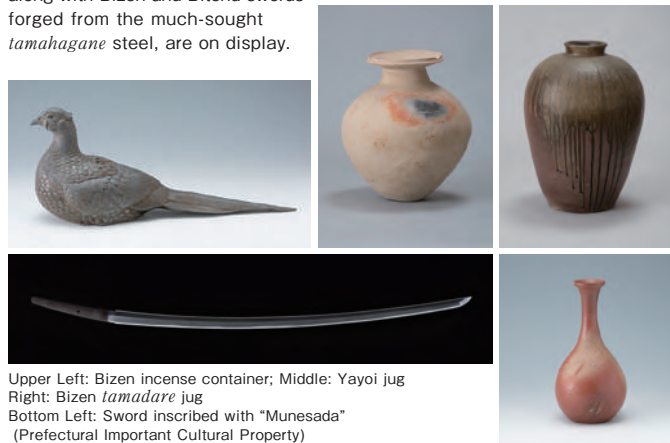
From Ancient Kibi to the Future

The Toto no Ma Room : Encounter Kibi's Essence



Kibi's Alluring Ancient Swords and Pottery

The well-proportioned form and thinness of the Yayoi pottery unearthed in Sakazu amaze us with outstanding technique. Cylindrical haniwa shed light on the secrets of ancient Kibi's advanced and cosmopolitan nature. A rare and well-preserved *Jokoto* sword. Bizen ware, which developed from Sue ware, had the largest utilitarian product market share in Japan during the Muromachi period (1336-1573), and reached the pinnacle of beauty as a tea ceremony ware during the Momoyama period (1568-1600). Handicrafts created as the domain sought to revive Bizen ware, which had declined in the Edo period (1603-1868). Such dazzling works, along with Bizen and Bitchu swords forged from the much-sought *tamahagane* steel, are on display.



Upper Left: Bizen incense container; Middle: Yayoi jug
Right: Bizen *tamadare* jug
Bottom Left: Sword inscribed with "Munesada"
(Prefectural Important Cultural Property)
Right: Bizen long-necked sake bottle with *hidasuki* pattern

About Our Symbol



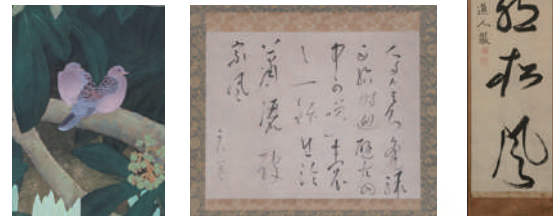
This symbol is an arrangement of an openwork pattern from cylindrical haniwa. The pattern is thought to have originated from a shell disk. We made it resemble fire, something indispensable for iron manufacturing and ceramics and the foundation of Kibi's prosperity since ancient times. It also expresses the passionate dedication of Shinjo Yamada, the Kurashiki businessman who built this museum's collection.

The Kanboku no Ma Room : Profound Poetry and Skillful Penmanship



The Edo Period's Intriguing Calligraphy

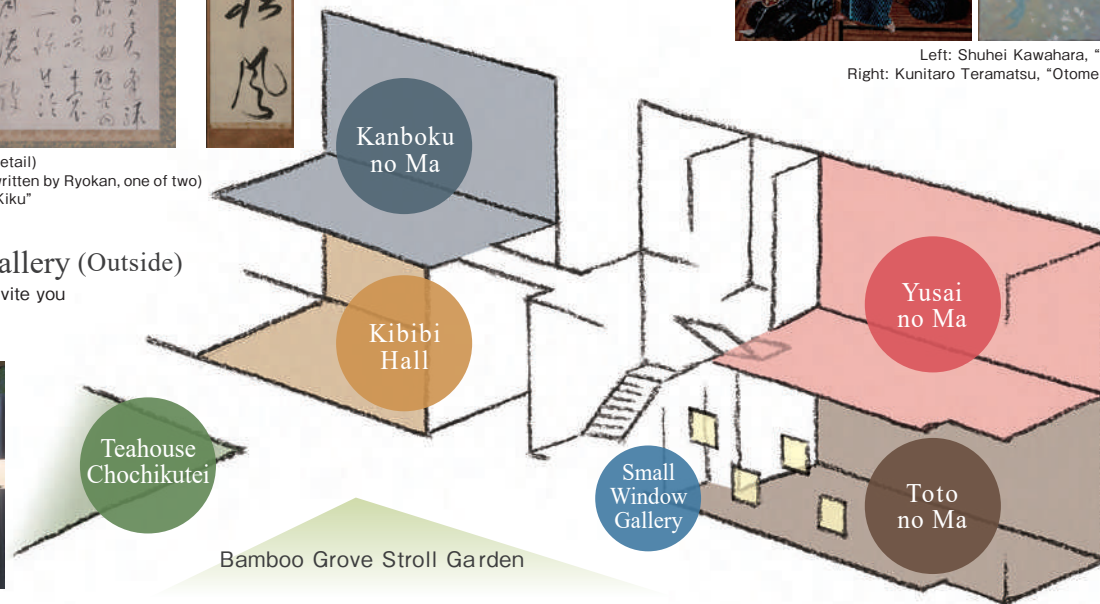
Displayed works include the highly spiritual calligraphy of Jakugon (chief priest of Tsurajima Hotoji Temple) and Ryokan (who trained at Tamashima Entsuji Temple); the genius-filled pieces of Kan Chazan (a Confucian scholar of Fukuyama Renjuku Academy), his student Rai San'yo, and Yamada Hokoku (a Confucian scholar from the Bitchu-Matsuyama domain); as well as the Japanese-style paintings of Uragami Shunkin and Jofu Kimura, both of whom are connected to Okayama.



Left: Jofu Kimura "Eijitsu Gogo" (detail)
Center: Ryokan "Kotsujiki" (hand-written by Ryokan, one of two)
Right: Jakugon "Touteini Shofu o Kiku"

Small Window Gallery (Outside)

Exhibiting small pieces that invite you to explore Kibi culture. Viewable by anyone.



The Yusai no Ma Room : A Hundred Flowers Blooming and Kibi's Rich Palette



The Fascinating World of Modern and Contemporary Art

You're invited to relax while viewing our collection of local artists' works, including Kunitaro Teramatsu, who led the Kansai oil painting scene in Kyoto during the dawn of Western-style painting in Japan; Jofu Kimura, a Kyoto-based master of natural landscapes who is not well known locally; and Shuhei Kawahara, a genius who left the Tokyo art world and returned to Kurashiki to pursue a unique artistic vision.



Left: Shuhei Kawahara, "Tsuji no Yoru"
Right: Kunitaro Teramatsu, "Otome Sange no Zu"

Teahouse [Chochikutei]

An antechamber and Shofuro-style eight-mat tearoom with a *biwadoko* space. Experience the soothing rustle of bamboo and the gentle sound of a kettle boiling while engaging in heartfelt conversations.



Kibibi Hall

A multi-purpose space for exhibitions, lectures, workshops, and other activities.



※The teahouse Chochikutei and Kibibi Hall can also be used for cultural activities. Please contact us for more information.

Parlor Kudamono Komachi

After encountering the beauty of Kibi, enjoy the area's fresh fruit.

